



Key Messages

- Significant snowfall for the North Central Mountains late tonight into Sunday morning.
- Snow likely for the Urban Corridor and NE Colorado Plains Saturday afternoon into Sunday midday.
- Much colder temperatures expected Saturday through Monday.

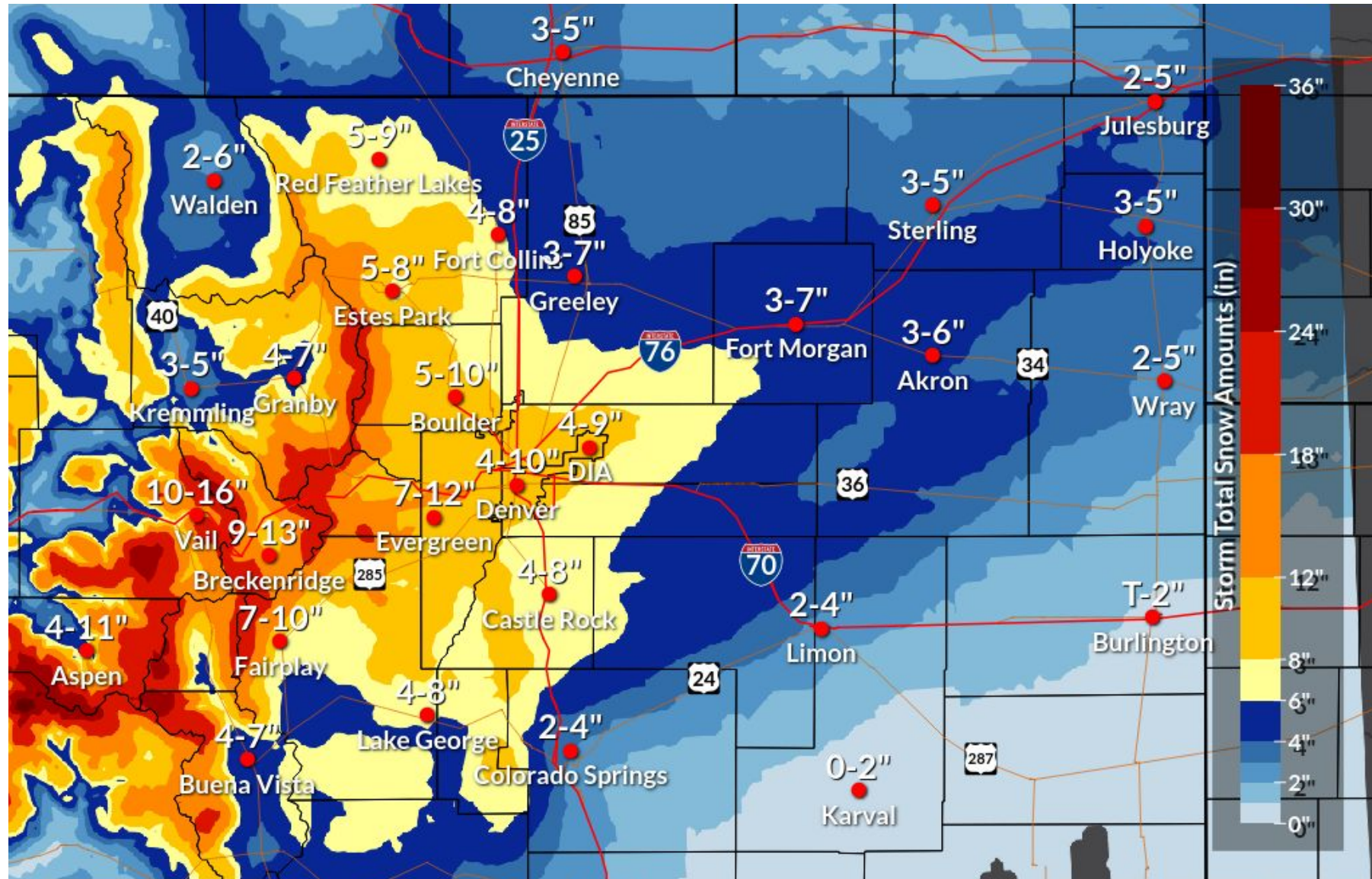
NEW

What Has Changed

A **Winter Storm Watch** covers the Denver Metro and parts of the foothills including Boulder and Evergreen.

Next Scheduled Update

- Saturday AM



Most Likely Snowfall Totals



Heavy Snow in the High Country

October 27, 2023

Midnight Tonight until Noon Sunday

Warning Details



Snow will spread into the north central mountains late tonight and continue through noon Sunday.



The heaviest snow is expected Saturday evening through Sunday morning.

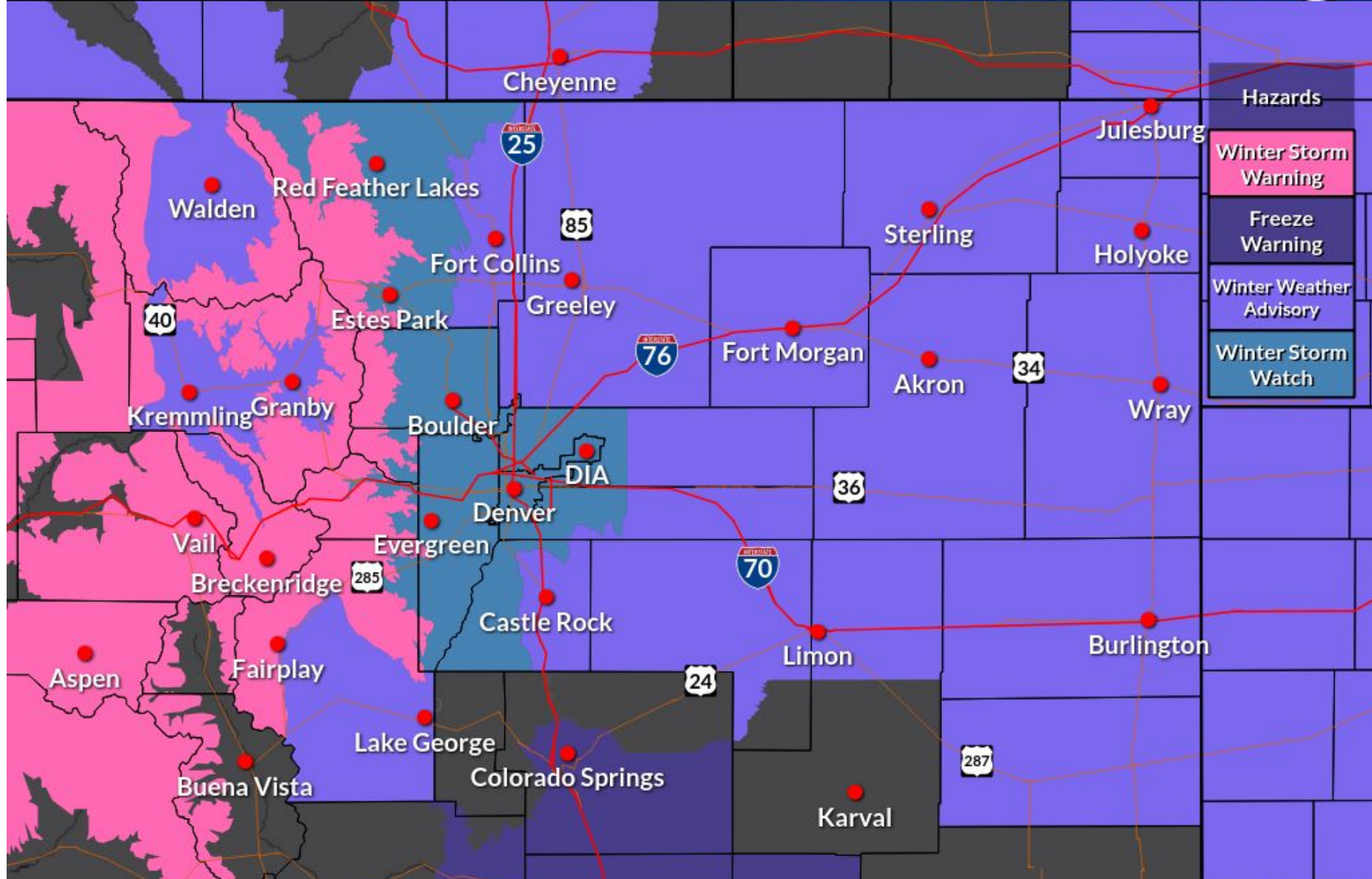
Quick Forecast

- Snow and cold expected for the lower elevations Saturday into Sunday.
- Temperatures will be cold enough for snow to accumulate on roads and surfaces.
- Hazardous travel conditions are possible across I-70 & I-25.

Current Winter Weather Headlines

Weather Forecast Office
Denver/Boulder

Issued Oct 27, 2023 2:23 PM MDT





Expected Winter Weather Impacts

October 27, 2023
3:06 PM

Saturday - Sunday

	Sat, Oct 28 - 12 AM	Sat, Oct 28 - 6 AM	Sat, Oct 28 - 12 PM	Sat, Oct 28 - 6 PM	Sun, Oct 29 - 12 AM	Sun, Oct 29 - 6 AM	Sun, Oct 29 - 12 PM
Denver Metro Denver, Boulder, Aurora, Centennial	Green	Green	Yellow	Orange	Yellow	Yellow	Yellow
Foothills Between 6,000 and 9,000ft	Green	Yellow	Orange	Orange	Orange	Yellow	Yellow
Palmer Divide Castle Rock, Larkspur, Elizabeth	Green	Yellow	Yellow	Orange	Yellow	Yellow	Yellow
Northeast Plains Fort Morgan, Akron, Limon, Sterling	Green	Yellow	Yellow	Yellow	Yellow	Yellow	Green
I-70 Mtn Corridor Genesee, Georgetown, EJMT, Dillon	Green	Yellow	Orange	Orange	Orange	Yellow	Yellow
South Park	Green	Yellow	Yellow	Orange	Orange	Yellow	Yellow

This outlook depicts timing and magnitude of potential impacts to local travel and infrastructure from snowfall rates and/or amounts, blowing snow, ice, and cold temperatures.

Potential aggravating factors such as time of day, pre-existing conditions, and holiday travel periods are also taken into consideration.

Risk Levels

Little to None

Minor

Moderate

Major

Extreme





Much Colder this Weekend

October 27, 2023
3:06 PM

	Temperature Forecast (°F)														Maximum
	10/27 Fri		10/28 Sat				10/29 Sun				10/30 Mon				
	12pm	6pm	12am	6am	12pm	6pm	12am	6am	12pm	6pm	12am	6am	12pm	6pm	
Boulder	39	43	35	31	29	24	22	20	25	24	12	15	40	34	43
Breckenridge	42	37	31	32	33	29	20	16	25	22	4	7	33	26	42
Castle Rock	46	45	33	30	32	26	22	19	21	18	13	12	38	31	46
Denver	42	47	36	32	29	26	23	21	24	21	12	13	39	36	47
Estes Park	45	42	33	30	31	20	15	11	22	17	2	3	35	26	45
Evergreen	42	40	30	28	29	20	16	12	18	15	5	8	34	29	42
Fort Collins	36	42	33	31	28	24	21	19	26	23	10	11	39	32	42
Ft. Morgan	39	46	32	28	28	23	21	19	27	25	14	11	39	36	46
Greeley	37	45	33	29	28	26	24	23	28	25	14	10	36	37	45
Julesburg	35	37	26	22	27	25	21	17	28	25	13	10	37	39	39
Kremmling	47	45	32	31	39	34	23	18	27	24	6	-2	30	29	47
Limon	44	43	28	26	32	22	17	14	22	22	17	8	42	35	44
Longmont	39	45	35	32	28	25	22	21	26	24	12	12	37	35	45
Sterling	37	41	29	24	22	22	21	17	28	25	13	12	38	37	41
Walden	43	40	29	28	35	23	15	8	18	13	-2	-5	27	24	43



Created: 10 am MDT Fri 10/27/2023 |





Forecast Confidence

October 27, 2023

3:06 PM

Timing

Low

Medium

High

Heaviest snowfall starts Saturday for the mountains and foothills. Snow diminishes Sunday late afternoon.

Snowfall Amounts

Low

Medium

High

Heavy snow likely for Front Range Mountains & parts of the foothills. Light to moderate snow will occur across the urban corridor & plains but actual totals under snow bands may vary considerable.

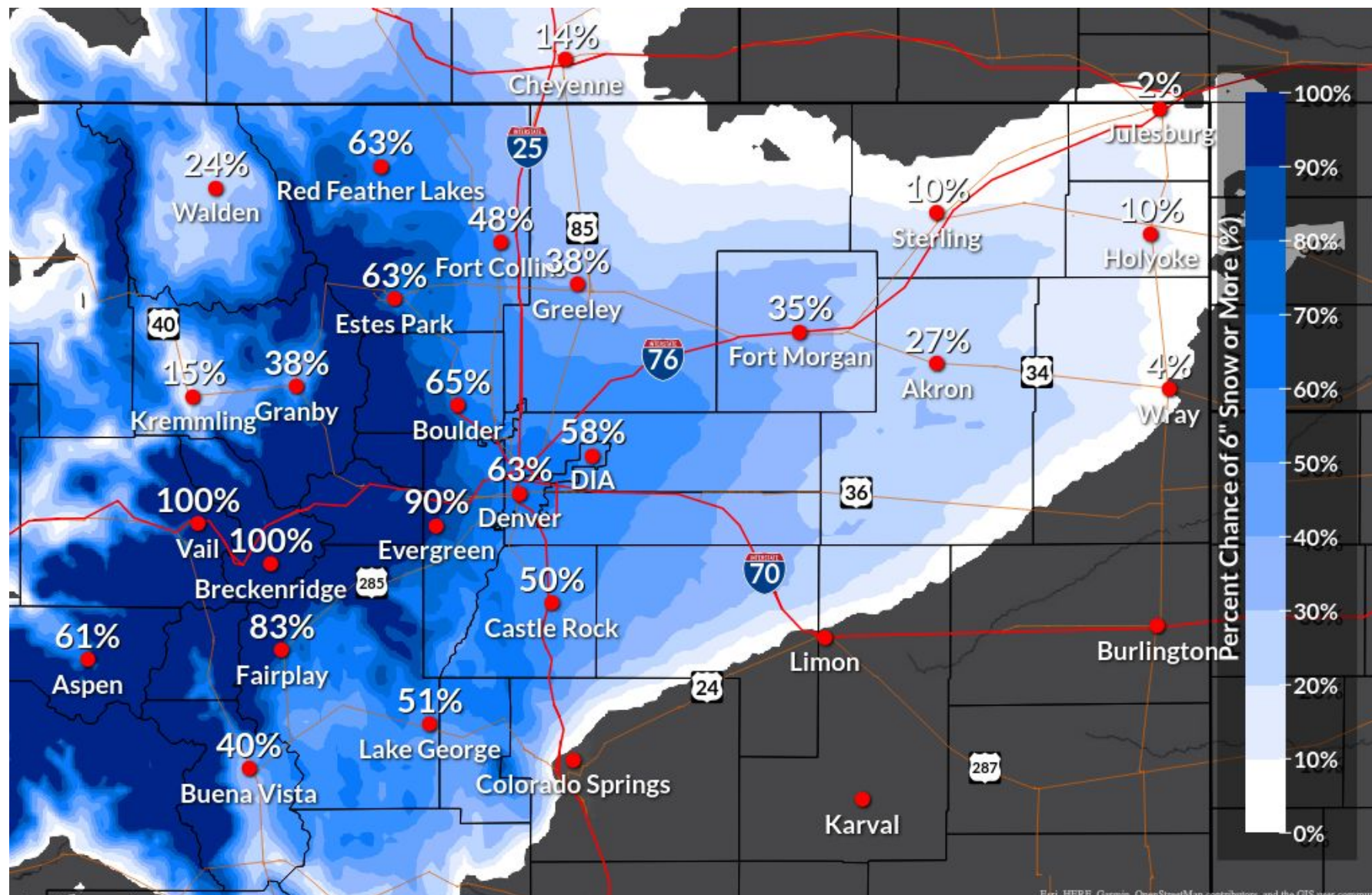
Impacts

Low

Medium

High

Heaviest snow along I-70 West and I-25 Saturday evening into Sunday morning.



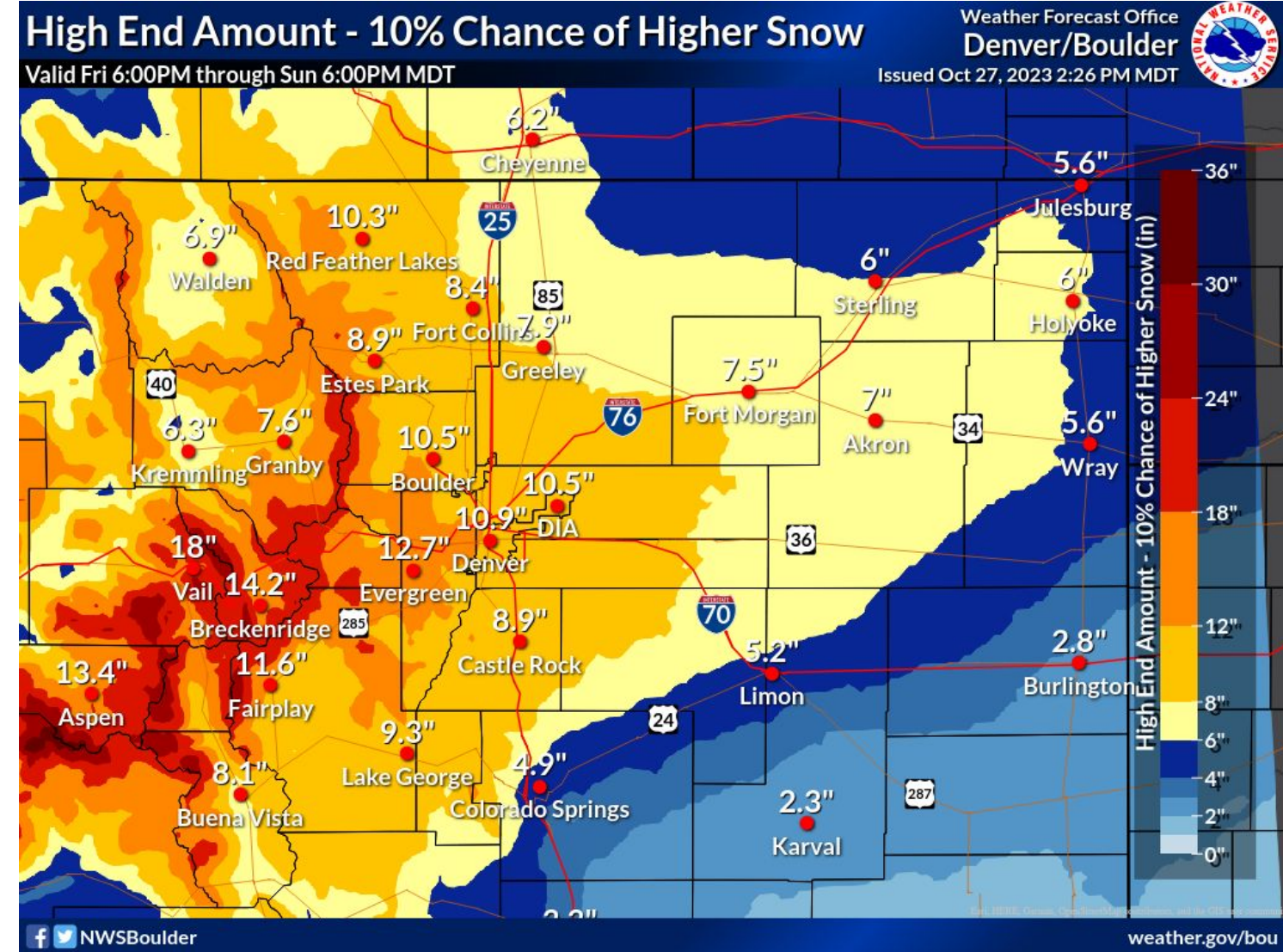
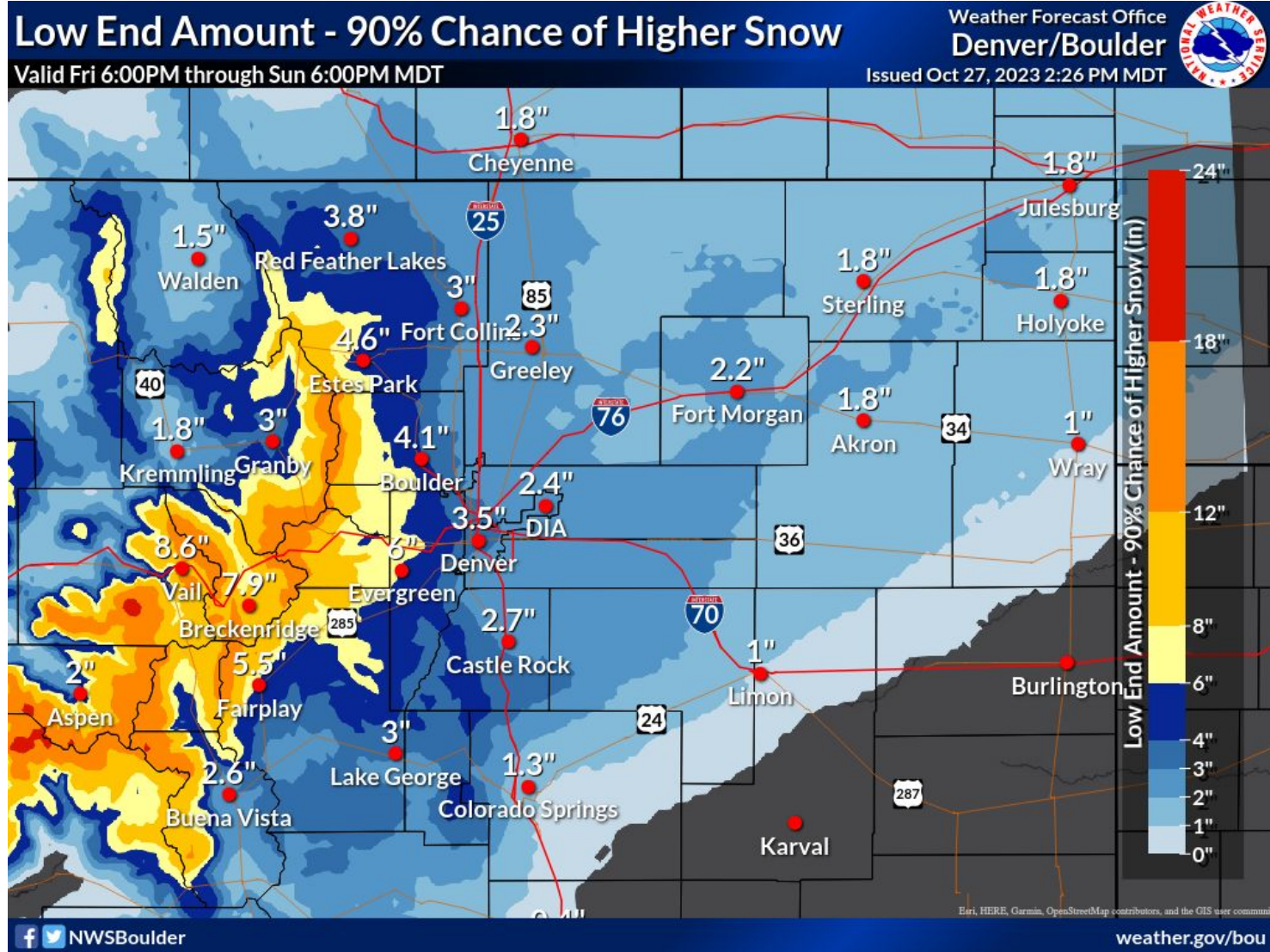
Probability of 6" of Snow or More





Low & High End Forecast Amounts

October 27, 2023
3:06 PM



9 in 10 Chance (90%) Low End Amount

1 in 10 Chance (10%) High End Amount

SNOW FORECAST

Friday PM - Sunday PM

Issued: 3:04 PM | October 27, 2023

14 to 20"
Vail Pass

15 to 21"
Eisenhower
Tunnel

8 to 11"
Silverthorne

11,100ft

8 to 12"
Georgetown

7 to 10"
Idaho Springs

7 to 12"
Genesee

5 to 11"
Denver

6 to 12"
Golden

2 to 4"
Limon

5,300ft



WEST → EAST

NWS Denver/Boulder

WEATHER.GOV/BOU



NATIONAL WEATHER SERVICE
OCEANIC AND ATMOSPHERIC ADMINISTRATION

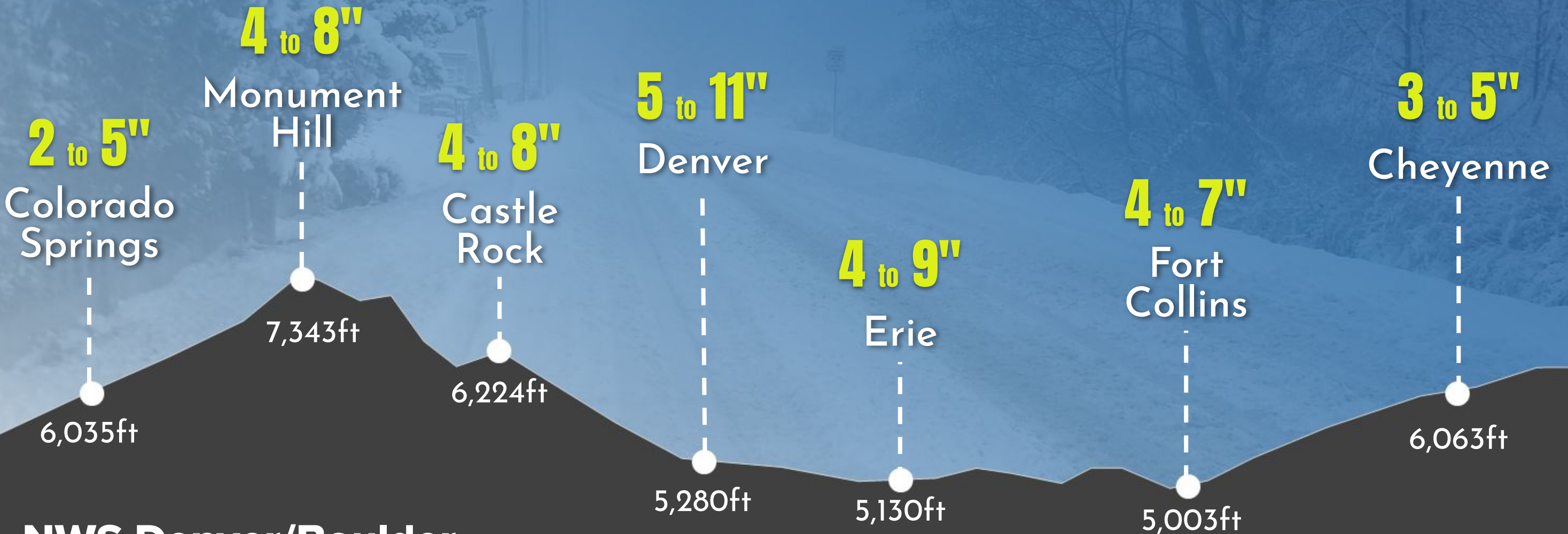


SNOW FORECAST

Friday PM - Sunday PM

Issued: 3:05 PM | October 27, 2023

SOUTH → NORTH

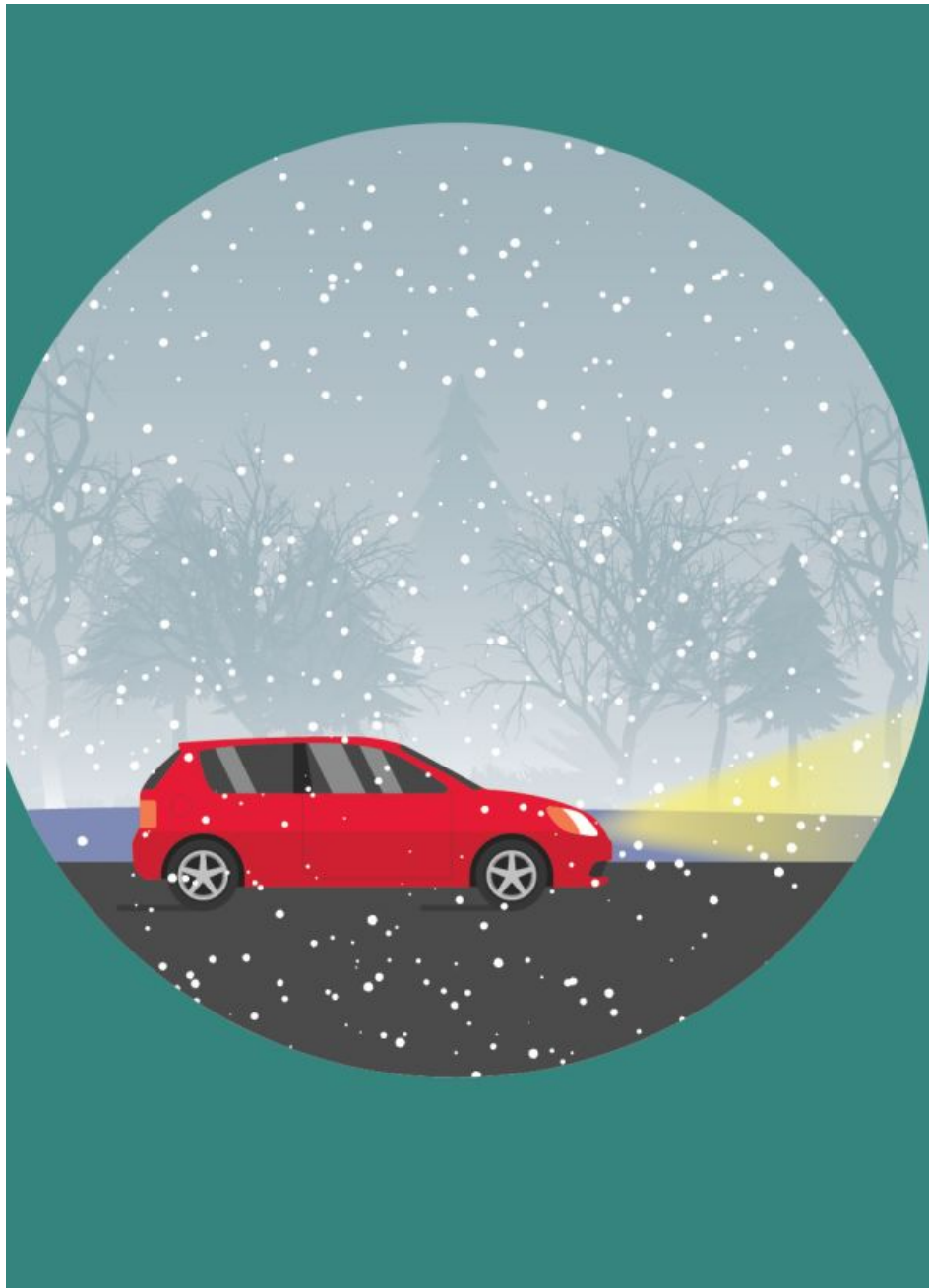


NWS Denver/Boulder

[WEATHER.GOV/BOU](https://weather.gov/BOU)



NATIONAL WEATHER SERVICE
OCEANIC AND ATMOSPHERIC ADMINISTRATION



Winter Driving

Slow down and use caution if you must travel during this upcoming winter storm as road conditions can change quickly. Before you travel, pack a winter survival kit for your vehicle. If possible, consider altering your travel plans.



[weather.gov](https://www.weather.gov)



County Information

October 27, 2023
3:06 PM

Click on the Links Below for Each County

[Denver Metro](#)

[Eastern Adams &
Arapahoe Counties](#)

[Boulder County](#)

[Clear Creek County](#)

[Douglas County](#)

[Elbert County](#)

[Gilpin County](#)

[Grand County](#)

[Jackson County](#)

[Jefferson County](#)

[Larimer County](#)

[Lincoln County](#)

[Logan County](#)

[Morgan County](#)

[Park County](#)

[Phillips County](#)

[Sedgwick County](#)

[Summit County](#)

[Washington County](#)

[Weld County](#)

